

Tranquility COLLECTION



UC482



UC484



Power Articulation Head

Looking for a power lift recliner you can sink into after a long day? The UC482 offers an oversized, extra plush back and a pocketed coil seating system which provides hours of relaxation. For added comfort and support, this design is available with an adjustable, articulating headrest as a UC484.



Copper



Hazelnut



Sterling



Calypso



Shiraz



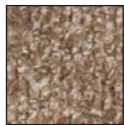
Bamboo*



Eucalyptus*



UltraPlush**



Wicker



Granite



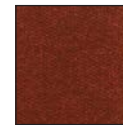
Spiced Cider



Twilight



Morning
Glory*



Rhubarb*



*UltraComfort*TM
AMERICA

Positioning you for life.

*Additional upcharge
**See sell sheet for 30 color option.

Model Number	UC482M	UC484-M
Size	Medium	Medium
Weight Capacity	375 LB	375 LB
Recline Positions	3	3
Chaise Seat	Yes	Yes
Pocketed Coil Seat	Yes	Yes
Back Type	Seam	Seam
Head Rest Cover	No	No
Arm Covers	No	No
Battery Back Up	Yes	Yes
Overall Width	38.5"	38.5"
Overall Height	44"	44"
Width Between Arms	21"	21"
Floor to Top of Seat	20"	20"
Seat Depth	21"	21"
Seat to Top of Back	30.5"	30.5"
Seat to Top of Arm	5.5"	5.5"
Seat Angle Raised	16°	16°
Distance Required from Wall Reclined	20"	20"
Extension Reclined from Back of Seat to End of Foot Rest	43"	43"
Life Time Warranty, Chair Frame, Lift Frame, Recline Frame, Recline Mechanism	Yes	Yes
Warranty on Electrical parts	3 YR	3 YR
Pro Rated Years 4 Thru 7	Yes	Yes
Warranty on Mechanical Labor	3 YR	3 YR
Warranty on Electrical Labor	1 YR	1 YR
Warranty on Fabric and Foam, and Pocketed Coils	1 YR	1 YR
Removable Back Option	Yes	Yes
Straight Lift Option Available	Yes	Yes
Left Hand Control Option Available	Yes	Yes
Extra Pocket Option Available	Standard	Standard
4-Motor Heat & Massage Available	Yes	Yes
2-Motor Heat & Massage Available	No	No
AutoFlex Available	No	No
Foot Rest Extension Option Available	No	No
Smart Tek System	Yes	Yes
Articulating Headrest	No	Yes

* See Customize Chart for dimension limits
 Sizes may vary depending on fabric, filling material, upholstery and carpet thickness.
 All measurements taken on concrete floor using levels and metal rulers.



User-friendly feature of every UltraComfort recline chair:

Easy to use battery backup system. Each UltraComfort recliner has a battery backup system in the electrical transformer which operates on two 9 volt batteries. In the event of a power failure, the battery system will raise the chair from the reclined to the seated position. The batteries should be replaced after one use.



Literature is current at time of printing. UltraComfort reserves the right to make changes to the product or literature at any time.



Complies with UL 73 and CSA C22.2 No. 68

Listing # E112417
 FNAE 80-214A



UltraComfort™
 AMERICA

Positioning you for life.

UltraComfort
 Phone: 866-793-5100
 Fax: 866-255-9962
 web: www.ultracomfort.net